

# One-day Tour



-----The second densely populated place in Japan after Tokyo



*Explore Osaka in 10-hour Trip*

*Time: Oct·24th, 2017*

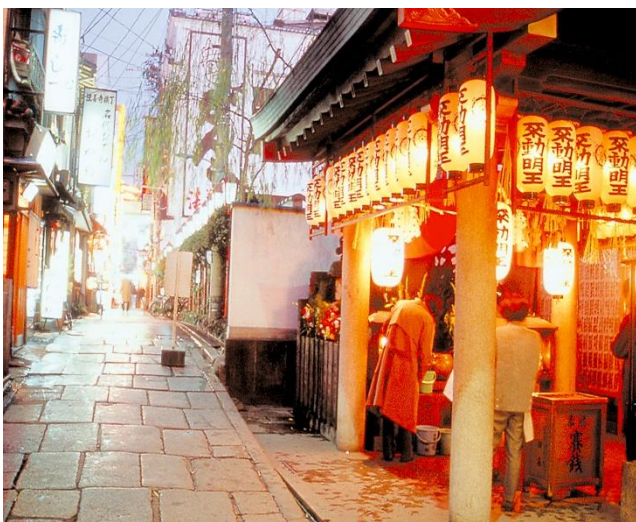
*Price: USD 120 per person*

*(Exclude meals)*

*Deadline: Oct·10th, 2017*

## Osaka Castle(天守閣)

Osaka Castle, which is a famous landmark, a popular sightseeing spot, and the symbol of Osaka, contains thirteen structures which have been designated as Important Cultural Assets by the Japanese government. Of special note are the grand gates and turrets along the outer moat. The steep walls that rise close to 30 meters high are made of huge blocks of stone that were transported to Osaka from quarries over 100 kilometers away. The sheer height of the walls and the wide moats they rise above make for a grand sight that can be matched by no other castle in Japan.

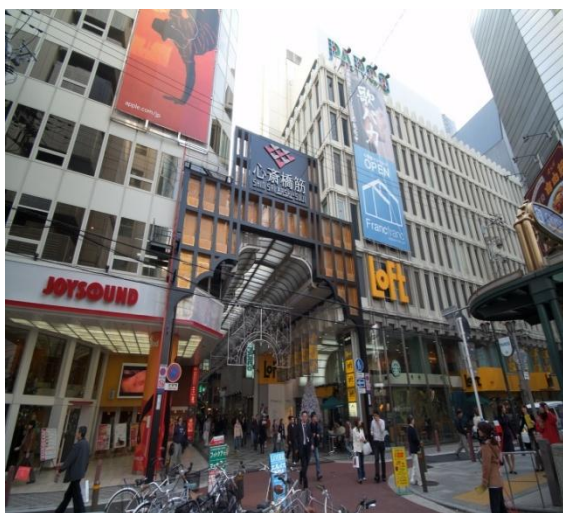


## Hozenji Yokochi (法善寺小巷)

This narrow, stone-paved lane next to Dotombori Street feels like the Osaka of olden days—of hundreds of years ago. Cozy and quaint, lined on both sides with small food shops and cafes, it earned instant fame with Sakunosuke Oda's novel "Meoto Zen'ai" (Sweet Bean Broth for Two). It is also famous for its moss-covered Fudo-myō statue, known as Mizukake Fudo. You will find a signboard with calligraphy written by the third Harudani Katsura on the east gate, and by Kambi Fujiyama on the west gate. The beautiful stone-paved pathways here, and the moss-covered Buddhist figure, represent the cultured aspects of Osaka.

## Dotombori (道頓堀美食街)

Dotombori is a symbol of the Minami Area and a mecca for the kuidaore food culture of Osaka. Dozens of restaurants line the Dotomborigawa River, and large famous billboards draw diners' attention. On the north side of the river, where geisha used to entertain their customers, are now small bars and restaurants squeezed together in rows. The southern side of the river is the center of the Dotombori area, which was once known as the theater district. Nowadays, colorful neon signs and flash signboards enliven the area, showing that the district still represents the passion of Osakans.



## Shinsaibashi-suji Shotengai (心齋橋)

Shinsaibashi-Suji Shopping Street, which runs east to Mido-Suji Avenue, is the best-known shopping area in Osaka, and an enduring symbol of the city. With a history of 380 years, it was already an established shopping area in the Edo Period. Shops of all kinds and for all ages line the street, a roofed arcade 600 meters long. There are traditional kimono tailors, western clothing and footwear retailers, restaurants and fast food outlets, jewelers, and boutiques featuring the latest fashions. It's great to take a casual stroll through the Shinsaibashi area. Many people enjoy window-shopping and savoring the food along the way.

## Floating Garden Observatory

### (Umeda Sky Building) (梅田空中庭院展望台)

The observation platform of this observatory is a bridge connecting the two towers of the Umeda Sky Building, whose roof features a doughnut shape that provides an unobstructed 360-degree view. While enjoying the breathtaking sights you can also directly feel the wind—which at 170 meters off the ground can get quite strong. From this observatory you can not only see all of Osaka but as far away as Awaji Island. The basement of the building houses the Takimi-Koji gourmet street with old fashioned images of Osaka from the 1920s.



#### Note:

Price: **USD 120 per person** (the fee doesn't include meals)

Please advise if you are interested in taking part in the one-day tour in Osaka **before Oct.10<sup>th</sup>**.